

# PRIVATE DINING



ASCEND  
PRIME STEAK & SUSHI



PREMIUM DETAILS



RENOWNED CUISINE



LUXURIOUS COCKTAILS



# ASCEND

PRIME STEAK & SUSHI

---

Located on the 31st floor of the Lincoln Square South-Tower building, Ascend Prime Steak & Sushi exudes a vibrant fusion of modern steak, sushi bar and lounge. The dining room compliments both the unobstructed lake and city views, as well as the searing culinary heartbeat of its open wood grill.

---

We invite you and your guests to have an unparalleled dining experience in one of our top floor private dining suites. Each perfectly appointed private dining suite offers unobstructed views of the Pacific Northwest with soaring floor to ceiling glass windows. Our contemporary suites elevate private dining with modern design, flexible seating arrangements and world class service.



From this perfectly appointed private dining suite, Vertigo offers unobstructed views of the Pacific Northwest with its soaring floor to ceiling glass windows. This contemporary suite elevates private dining with its modern design, audio visual capabilities and our custom art chandelier "Sanctuary"



VERTIGO

Providing a setting for up to 60 guests, the floor to ceiling glass windows look northwest, where guests will enjoy the Bellevue city skyline, Lake Washington spanning as far as the Cascade mountain range. The room comes equipped with retractable walls for a more intimate setting. Offering a private terrace, the Vista Suite is the ideal location for an indoor/outdoor event.



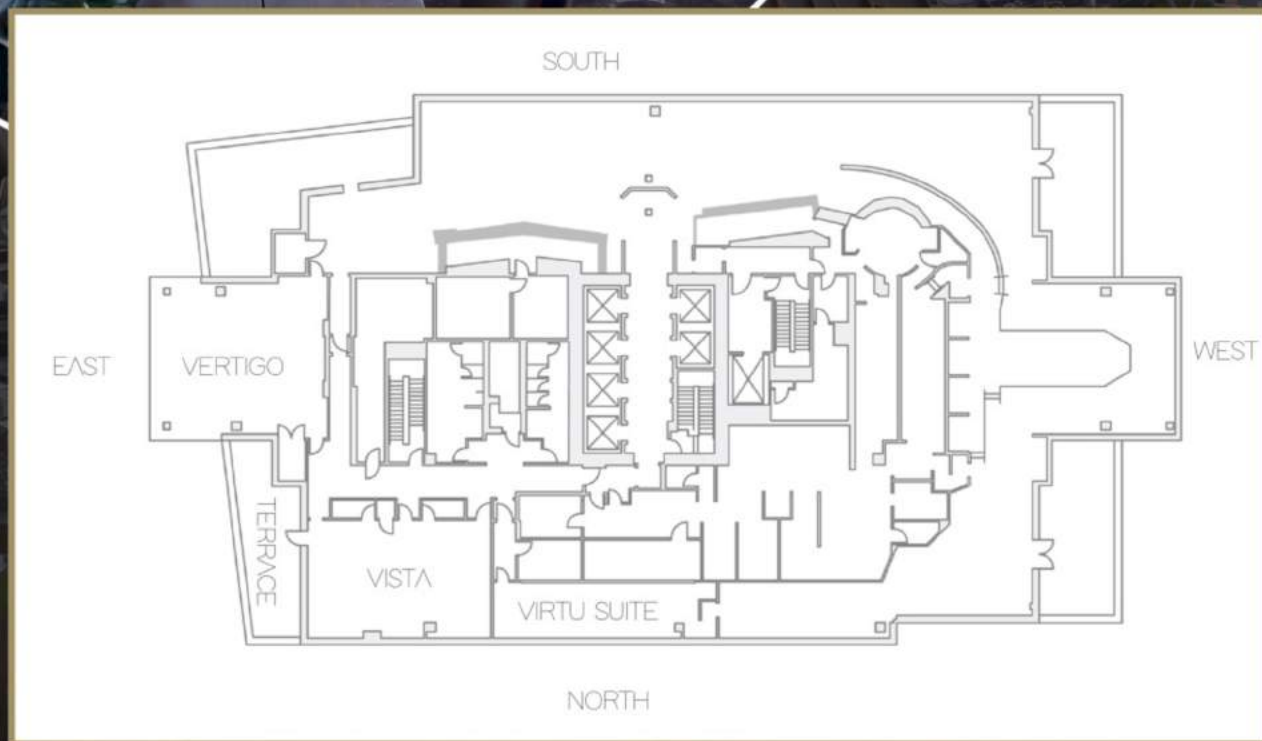
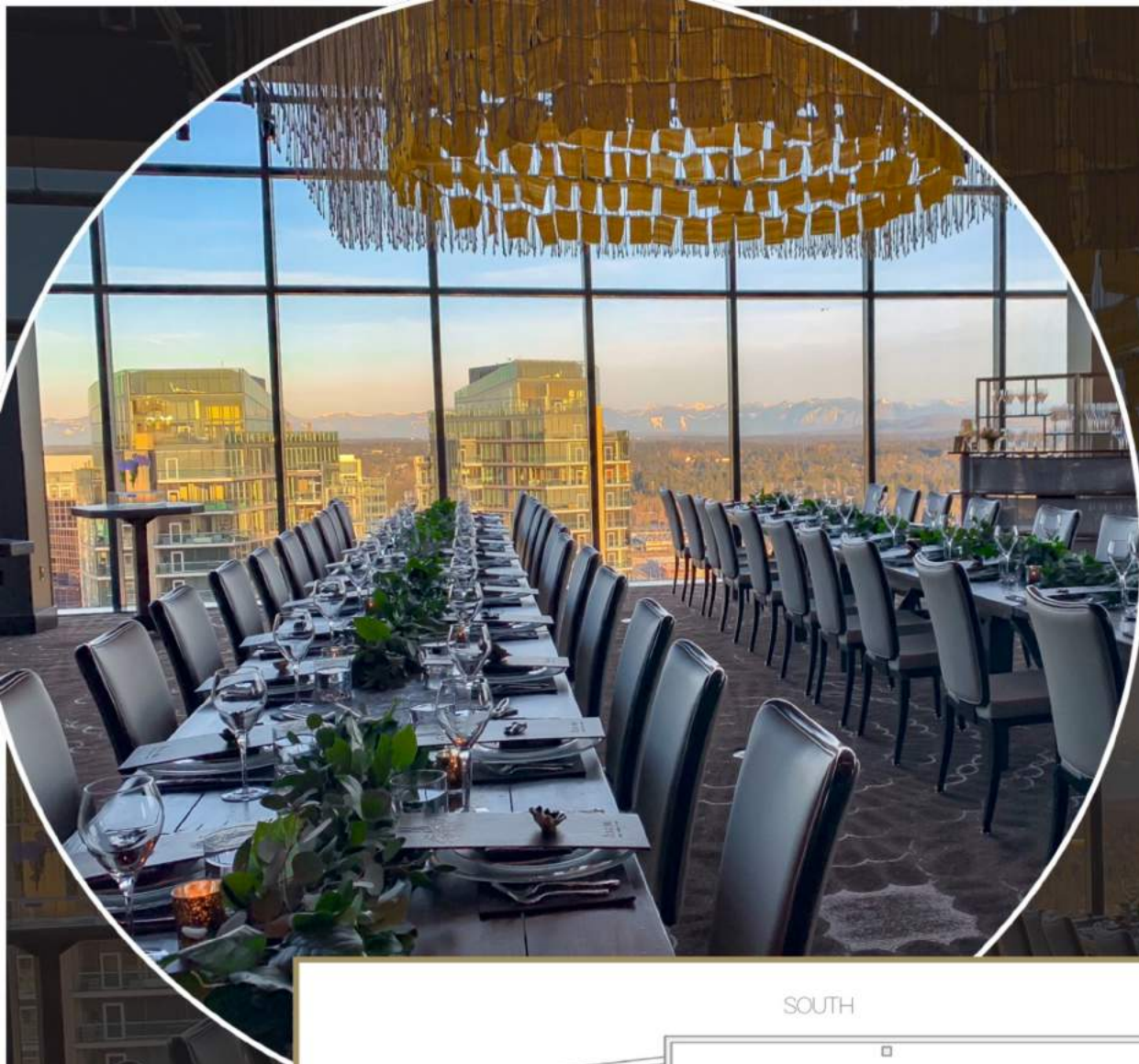
VISTA

The exclusive setting for an intimate gathering or meeting, Virtu offers capacity for 16 guests. With sweeping views that face northwest, Lake Washington and the cityscape of Bellevue create the ambiance of this suite. Special features in the Virtu Suite include a private wet bar, soft lounge seating and audio visual capabilities.



VIRTU SUITE





**ASCEND**  
PRIME STEAK & SUSHI

Rachel Howie  
Private Dining Manager  
425 218 2125  
Rachel@ascendprime.com

